

M/S Armelea



Marconi (or Bermuda) Ketch.

Length o.a. 23 m.

Waterline length 18.5 m.

Beam 5.7 m.

Draught 2.2 m.

Displacement 47 tons.

Sail area 385 sq.m.

Boatbuilder Cantieri Valdetaro – Le Grazie (SP) - Costr. No. 143.

Naval architect Franco Anselmi Boretti 1967/1968.

Italian flag, year of registration 1969 - SP 2310 D.

One master cabin with bathroom.

Three guest cabins with two bathrooms.

One double cabin for crew, with bathroom.

Building materials: mixed structure (oak frames and steel floor plates); keel, stem, sternpost, planking, shelves and beams in iroko; teak deck and bulwarks; Douglas fir masts with an oval cross-section; interiors in mahogany, rosewood, maple, teak, iroko; stainless steel and brass.

Two Iveco Aifo 8210 engines 220cv/each.

N. 02 Vetus generator GLX14SI 14kVA 230V 50Hz (dated 2022).

Schenker Modular water maker 100M24 100lt/h.

Two Gianneschi pumps. Three bilge pumps.

Hawker gel battery bloc.

CO2 fire extinguisher.

Complete Furuno electronic instruments (GPS, autopilot, sat nav, radar, VHF, sat phone, TV sat, echo sounder, Epirb).

Induction cooker. Electric oven. Two refrigerators. Freezer. Washing machine

Tender ZAR 49SL (4,97mt) equipped with Suzuki engine 40cv 4T (both dated 2019).

Two inflatable rafts for 10 people each.

Hydraulic jib roller-furler and anchor windlass. Electric winches.

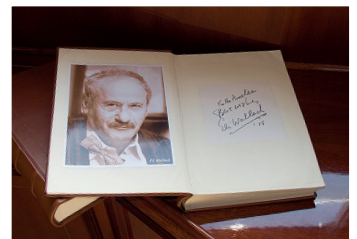
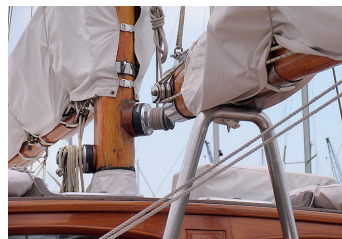
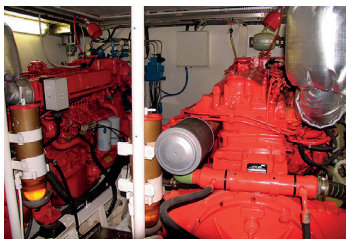
Harken sails.

Fuel tanks capacity 5,000 litres.

Water tanks capacity 6,000 litres.

Maximum speed 11.5 knots.

Cruising speed 9 knots.



A classic yacht illustrated and described in various publications and books; completely restructured in 2003/2004, fully maintaining the original design; in 2013, further refurbishing works were carried out (dinette, bathrooms) and instruments and watermaker were replaced (Furuno and Schenker); in 2017 new teak deck, renovation of hydraulic and electrical systems; in 2022 full external repainting, engine overhaul, two new Vetus generators installed (see details above mentioned).

Annual maintenance and checks: all the equipment and instruments are efficient and functional; the certification and safety equipment comply with current ocean sailing legislation.

ARMELEA